

# THE COLONNADE

EVENT SPACE AND BOUTIQUE HOTEL  
A POSH LIFE L.L.C. PROPERTY



## MENU & SERVICE OPTIONS 2016

# OUR PHILOSOPHY

AT THE COLONNADE, OUR PHILOSOPHY IS ROOTED IN PERSONAL ATTENTION TO EVERY DETAIL.

OUR INTENTION IS TO TAILOR AN EVENT TO THE SPECIFIC NEEDS AND DESIRES OF THE CLIENT BY DEVELOPING MENUS, DÉCOR, AND THEMES THAT REFLECT EACH CLIENT'S OWN PERSONALITY OR BUSINESS NEEDS.

THE MENU EVOLVES THROUGH CONVERSATIONS WITH EACH CLIENT ABOUT THE EVENT, THE REASONS FOR CELEBRATING AND ANY SPECIFIC CULINARY INTERESTS.

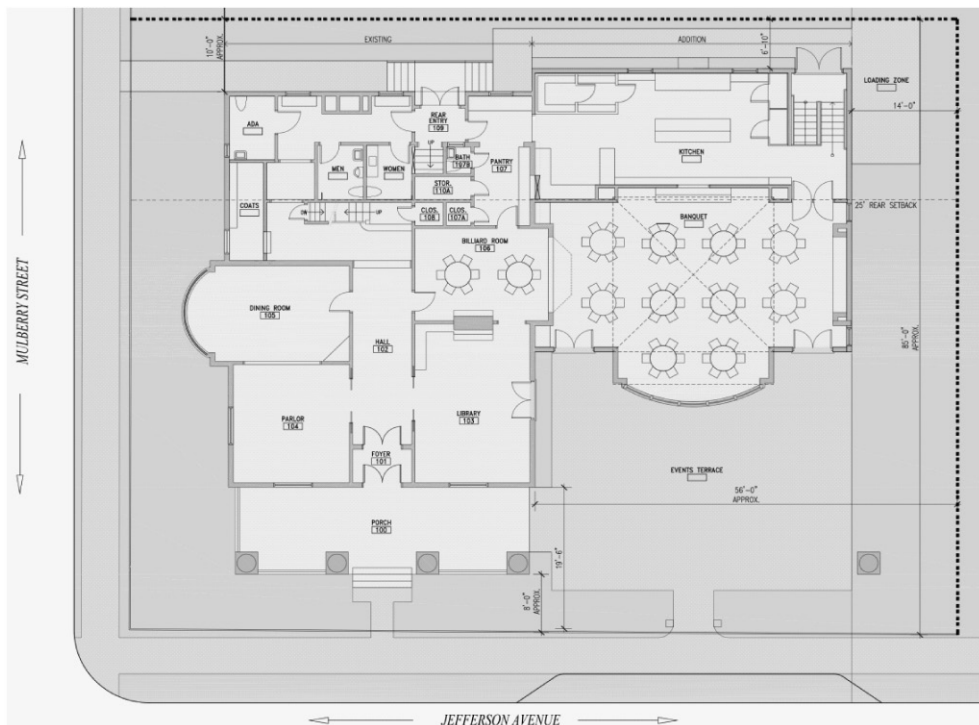
DECORATION MEANT TO COMPLEMENT THE EVENT IS METICULOUSLY PLANNED TO INCLUDE A VARIETY OF FRESH FLORAL ARRANGEMENTS, AS WELL AS, PROPS AND DECORATIVE ELEMENTS THAT TIE BACK TO THE EVENT'S PURPOSE.

BUSINESS PRESENTATIONS ARE PLANNED TO INCORPORATE THE LATEST TECHNOLOGY TO EASILY CONVEY A MESSAGE AND TO MEET THE SPECIFIC NEEDS OF THE BUSINESS.

IT IS THROUGH EXTENSIVE PERSONAL ATTENTION TO DETAIL THAT THE COLONNADE DISTINGUISHES ITSELF FROM OTHER EVENT SPACES.

AT THE COLONNADE, YOU WILL RECEIVE OUR PERSONAL ATTENTION TO EVERY DETAIL ALLOWING FOR A MOST MEMORABLE EVENT IN A MOST MEMORABLE SPACE.

## THE SPACE



THE COLONNADE CAN ACCOMMODATE UP TO 120 PEOPLE FOR A SIT DOWN EVENT IN ITS BRAND NEW DINING ROOM.

THE PROPERTY OFFERS FLEXIBILITY TO ACCOMMODATE MORE SEATED GUESTS IN THE ORIGINAL DINING ROOM AND PARLOR OF THE MAIN HOUSE.

THE EVENTS TERRACE CAN ALSO BE TENTED FOR ADDITIONAL SEATING FOR UP TO 80, WEATHER PERMITTING. SMALLER ROOMS FOR MORE INTIMATE OR PRIVATE GATHERINGS ARE ALSO AVAILABLE.

# BAR/BEVERAGE MENU

## **CHAMPAGNE TOAST OR BAR SERVICE**

\$4.95 PER PERSON OR \$20.00 PER BOTTLE TO BE ADDED TO THE BAR

## **PREMIUM BAR PACKAGE**

BEER, WINE AND SODA SOFT BAR, ALL CALL BAR ITEMS IN ADDITION TO POURING THE FINEST MIXED DRINKS FEATURING GREY GOOSE, PATRON, BOMBAY SAPPHIRE, GENTLEMAN JACK, HENNESSY VSOP, AND JOHNNY WALKER BLACK, IMPORTED AND DOMESTIC BOTTLED BEER, PREMIUM WINE INCLUDES SODA, COFFEE, AND TEA

\$19.95 PER PERSON FOR 2 HOURS

\$5.95 PER PERSON FOR EACH ADDITIONAL HOUR

## **CALL BAR PACKAGE**

BEER, WINE AND SODA SOFT BAR IN ADDITION TO POURING MIXED DRINKS FEATURING SMIRNOFF, MALIBU BAY, BACARDI, CAPTAIN MORGAN, JOSÉ CUERVO, NEW AMSTERDAM, JACK DANIELS, SEAGRAM'S VO, JOHNNY WALKER RED, JAMESON, CANADIAN CLUB, OLD GRAND DAD, AMARETTO, KHALUA, AND BAILEYS, DOMESTIC BOTTLED BEER (IMPORTED BOTTLED BEER AVAILABLE AS AN ADD-ON), INCLUDES SODA, COFFEE, AND TEA

\$17.95 PER PERSON FOR 2 HOURS

\$4.95 PER PERSON FOR EACH ADDITIONAL HOUR

## **BEER, WINE, SODA SOFT BAR**

SERVING DOMESTIC BOTTLED BEER: COORS, COORS LIGHT AND SAM ADAMS SEASONAL HOUSE WINES - CHARDONNAY, PINOT GRIGIO, CABERNET, SHIRAZ, PINOT NOIR, AND MERLOT

\$12.95 PER PERSON FOR 2 HOURS

\$4.95 PER PERSON FOR EACH ADDITIONAL HOUR

## **SODA, COFFEE, TEA, AND ICED TEA SERVICE**

INCLUDES COCA-COLA PRODUCTS, FRESH BREWED COFFEE, TEA, AND ICED TEA

\$3.95 PER PERSON FOR 2 HOURS

## **HOSTED CONSUMPTION / CASH BAR**

\$1.95 PER PERSON SET UP FEE

*\$1.95 PER PERSON, PER HOUR WILL BE CHARGED TO EXTEND A BAR PACKAGE PAST THE END TIME OF YOUR EVENT*

*SPECIALTY WINES, CHAMPAGNE, PORTS, AFTER DINNER CORDIALS CAN BE ADDED AT AN ADDITIONAL CHARGE*

*ALL FOOD AND LIQUOR IS SUBJECT TO A 20% SERVICE CHARGE AND APPLICABLE SALES TAX.*

# SIGNATURE APPETIZERS

**\$1.95 PER PERSON/PER CHOICE**

ZUCCHINI ROLL WITH HERBED GOAT CHEESE AND RED PEPPER

PHYLLO WRAPPED ASPARAGUS WITH ASIAGO CHEESE

PUFF PASTRY PINWHEEL WITH PROSCIUTTO, GRUYERE AND BASIL

GOAT CHEESE AND MUSHROOM IN A PHYLO CUP

FRIED RAVIOLI WITH MARINARA DIPPING SAUCE

BACON WRAPPED DATES STUFFED WITH ALMOND

CRANBERRY GLAZED MEATBALL

MINI YUKON GOLD POTATO PANCAKE

BITE SIZE MACARONI AND CHEESE BALLS

BUFFALO CHICKEN BITE WITH BLUE CHEESE

SPINACH AND FETA IN PHYLO CUP

VEGETABLE ROLL, CALIFORNIA ROLL AND SPICY CRAB ROLL

FRESH VEGETABLE SPRING ROLL

**\$2.95 PER PERSON/PER CHOICE**

LAMB CHOP LOLLIPOP

SHRIMP COCKTAIL SHOOTER

CRISPY COCONUT SHRIMP

SCALLOPS WRAPPED WITH HICKORY SMOKED BACON

PANKO CRUSTED JUMBO LUMP CRAB BITE

SMOKED SALMON CRUSTINNI

SHRIMP AND LOBSTER TOAST

MINI BEEF WELLINGTON

SEARED BEEF TENDERLOIN SERVED ON HERBED CROSTINI WITH WASABI CREAM CHEESE

ADDITIONAL SEASONAL APPETIZERS AVAILABLE

*ALL FOOD AND LIQUOR IS SUBJECT TO A 20% SERVICE CHARGE AND APPLICABLE SALES TAX*



# SIGNATURE ENTREES

## **\$19.95 PER PERSON**

PRE CARVED FILET OF BEEF  
GRILLED PORK FLAT IRON STEAK  
PANKO CRUSTED CHICKEN BREAST WITH FIRE ROASTED TOMATO SAUCE  
COD CASINO  
CHEFS VEGETARIAN OPTION

## **\$23.95 PER PERSON**

GRILLED FLANK STEAK AU POIVRE  
SALMON WITH BROWN SUGAR OATMEAL CRUST AND MAPLE CRANBERRY GLAZE  
FIVE HOUR BRAISED BONELESS SORT RIBS  
SEARED AHI TUNA STEAK WITH SESAME CRUST  
STUFFED CHICKEN WITH SPINACH, ASIAGO CHEESE AND RED PEPPERS  
RED SNAPPER WITH SEASONAL SALSA  
PAN SEARED AIRLINE CHICKEN BREAST  
VEAL SALTIMBOCCA

## **\$26.95 PER PERSON**

TOURNEDOS OF BEEF WITH GREEN PEPPERCORN SAUCE  
6 OZ FILET OF BEEF TENDERLOIN - MARKET PRICE  
THE COLONNADE SIGNATURE CRAB CAKES WITH SPICY REMOULADE  
OVEN ROASTED TURBO WITH TOMATO CAPER SAUCE  
LOBSTER RAVIOLI  
SPICE RUBBED LAMB CHOPS  
LOBSTER TAIL - MARKET PRICE

*ALL DINNERS INCLUDE THE COLONNADE SIGNATURE SALAD, SEASONAL VEGETABLES AND OTHER APPROPRIATE ACCOMPANIMENT, GOURMET COFFEE AND SPECIALTY TEAS*

*ANY TWO ENTRÉES CAN BE COMBINED INTO A DUAL PLATE \$32.95*

*ADD A PASTA COURSE FOR \$3.95*

*ADD A TRIO OF SEASONAL MINI DESERTS TO ANY ENTRÉE \$5.95  
OR DESSERT TRAY FOR THE TABLE \$3.95 PER PERSON*

*ALL FOOD AND LIQUOR IS SUBJECT TO A 20% SERVICE CHARGE AND APPLICABLE SALES TAX.*

# SIGNATURE STATIONS

## PETITE ENTRÉE

A COMBINATION OF DELICIOUS SELECTIONS TO PROVIDE A COMPLETE MEAL.  
THE STATION INCLUDES: THE COLONNADE SIGNATURE SALAD, CHOICE OF PRE CARVED ROAST BEEF,  
TURKEY BREAST, PANKO CHICKEN, HAM OR PORK LOIN, MASHED POTATO AND SEASONAL VEGETABLE

**\$19.95 PER PERSON**

PRE CARVED FILET OF BEEF, CRAB CAKES OR COD CASINO CAN BE ADDED FOR \$6.95 PER PERSON  
PASTA CAN BE ADDED FOR \$3.95 PER PERSON

## CHEF'S CARVING STATION

A CARVING STATION WITH CHOICE OF ONE: FILET OF BEEF TENDERLOIN, PORK TENDERLOIN,  
VIRGINIA BAKED HAM, OR OVEN ROASTED TURKEY BREAST. EACH SERVED WITH A SELECTION OF  
APPROPRIATE GRAVIES AND SAUCES AND BREADS

**\$14.95 PER PERSON**

ADD AN ADDITIONAL MEAT, CRAB CAKES OR FISH FOR \$6.95 PER PERSON  
\$50.00 CHEF FEE

*THE COLONNADE RECOMMENDS THREE OR MORE OF THE FOLLOWING STATIONS  
FOR A GREAT DINING EXPERIENCE*

## TOUR OF ITALY

THE CHEF'S CREATION OF ITALIAN DISHES CONSISTING OF THE FOLLOWING: CHOICE OF CAESAR SALAD  
WITH SHAVED PARMESAN CHEESE OR ANTIPASTO SALAD WITH GRILLED VEGETABLES.

3 PASTAS - CHEESE TORTELLINI, RAVIOLI, PENNE. LOBSTER RAVIOLI (\$2.95 PER PERSON EXTRA)

3 SAUCES - ALFREDO, VODKA, FRESH TOMATO AND BASIL,

ACCOMPANIED BY BREAD STICKS AND GRATED PARMESAN CHEESE

**\$12.95 PER PERSON**

ADD GRILLED CHICKEN \$4.95 OR SHRIMP \$6.95 PER PERSON

## ASIAN

AN ARRAY OF FAR EASTERN FOOD TO EXCITE THE PALATE.

SELF SERVE CHICKEN OR BEEF SATAY WITH PEANUT AND TERIYAKI DIPPING SAUCE, COLD SESAME  
NOODLES SERVED WITH CHOP STICKS, PORK POT STICKERS, FRESH VEGETABLE SPRING ROLLS,  
ASSORTED SUSHI ROLLS, SEARED TUNA SERVED WITH FRESH GINGER, WASABI AND SOY SAUCES

**\$9.95 PER PERSON (CHOOSE 3 FROM THE LIST ABOVE)**

**\$11.95 PER PERSON (CHOOSE 4 FROM THE LIST ABOVE)**

## SOUTH OF THE BORDER "FIESTA"

A LIVELY STATION OF TRADITIONAL MEXICAN CUISINE: FRESH GUACAMOLE, FRESH SALSA,  
CHEESE QUESADILLA, FAJITAS OF BEEF OR CHICKEN WITH GRILLED PEPPERS AND ONIONS,  
SERVED WITH TORTILLAS, MEXICAN RICE AND BEANS,

ASSORTED CONDIMENTS: SOUR CREAM, SHREDDED CHEESE, SHREDDED LETTUCE

**\$8.95 PER PERSON**

## THE COLONNADE MEAT BALL TABLE

PORK, BEEF, AND CHEESE MEAT BALL WITH THE COLONNADE SAUCE  
CHICKEN, TURKEY, AND BEEF MEAT BALL IN A PARMESAN CREAM SAUCE

ALL BEEF MEAT BALL WITH A CHUNKY MARINARA SAUCE

SERVED WITH ASSORTED BREADS AND CHEESES

**\$8.95 PER PERSON**

(CONTINUED ON NEXT PAGE)



### **SALAD TABLE**

A SELECTION OF DELICIOUS, FRESH SALADS INCLUDING : CLASSIC CAESAR, WALDORF, GREEK SALAD WITH PASTA, RED POTATO SALAD, MIXED GREENS WITH CRANBERRY AND CRUMBLLED BLUE CHEESE, ANTIPASTO WITH GRILLED VEGETABLES, ASSORTED MEATS AND CHEESES

**\$6.95 PER PERSON (CHOOSE 3)**

ADD GRILLED CHICKEN \$4.95 OR SHRIMP \$6.95 PER PERSON

### **RISOTTO**

FRESHLY MADE RISOTTO WITH CUSTOMIZED ADDITIONS : FRESH ASPARAGUS TIPS, BABY PEAS, PANCETTA, MUSHROOMS, CHEESES AND ROASTED SQUASH

**\$7.95 PER PERSON**

ADD GRILLED CHICKEN \$4.95 OR SHRIMP \$6.95 PER PERSON

### **MASHED POTATO**

A SELECTION OF GOURMET MASHED POTATOES SERVED IN A MARTINI GLASS. SWEET POTATO, GARLIC YUKON GOLD AND RED BLISS POTATO. SELF SERVE MIX-INS INCLUDING: SOUR CREAM, CHIVES, CHEDDAR CHEESE, BACON, CANDIED PECANS AND MARSHMALLOWS

**\$7.95 PER PERSON**

ADD LOBSTER AT MARKET PRICE

\$50.00 SERVER FEE

### **DESSERT STATION**

SWEET TREATS FOR ALL AGES! A SELECTION OF MINI DESSERTS: HOUSE MADE CANOLLI'S AND SEASONAL MINI DESSERTS

**\$7.95 PER PERSON**

### **S'MORE STATION**

A MAKE YOUR OWN S'MORE STATION WITH MARSHMALLOWS, GRAHAM CRACKERS, CHOCOLATE BARS, PEANUT BUTTER CUPS AND ASSORTED S'MORES DESSERTS. NATIONAL S'MORES DAY IS CELEBRATED YEARLY ON AUGUST 10TH IN THE USA.

**\$6.95 PER PERSON**

### **CRUDITÉ AND CHEESE DISPLAY**

ALL OF YOUR SEASONAL FAVORITES PRESENTED IN A BEAUTIFUL DISPLAY.

FRESH SEASONAL VEGETABLE DISPLAY WITH SIGNATURE SPINACH DIP

GARLIC HUMMUS PLATTER WITH FLATBREADS

ASSORTMENT OF DOMESTIC AND IMPORTED CHEESES WITH A SELECTION OF CRACKERS

**\$6.95 PER PERSON**

ADD SHRIMP COCKTAIL SHOOTER \$2.95 PER PERSON

ADD FRUIT PLATTER \$2.95 PER PERSON

### **CONEY ISLAND TEXAS WIENERS**

CONEY ISLAND TEXAS WIENERS SERVED ON A STEAMED BUN WITH CHOPPED ONIONS, SPICY MUSTARD AND HOT WIENER SAUCE. A SCRANTON FAVORITE!

**\$4.95 PER PERSON**

### **KIDS MEAL**

CHOICE OF 1 MAIN:

CLASSIC CHICKEN FINGERS , THE COLONNADE OLD FORGE STYLE PIZZA OR SLIDERS (MINI CHEESE BURGERS)

CHOOSE 1 SIDE: FRENCH FRIES, MACARONI AND CHEESE, PEANUT BUTTER AND JELLY SANDWICHES, FRUIT, PASTA WITH MARINARA SAUCE

**\$12.95 PER PERSON**

ADD AN ADDITIONAL MAIN OR SIDE CHOICE FOR \$2.95 PER PERSON

*ALL FOOD AND LIQUOR IS SUBJECT TO A 20% SERVICE CHARGE AND APPLICABLE SALES TAX.*

# SIGNATURE BRUNCH STATION

**\$19.95 PER PERSON**

ASSORTED SEASONAL MUFFINS, BREADS AND PASTRIES  
SERVED WITH BUTTER AND ASSORTED PRESERVES

MIXED GREEN SALAD WITH SEASONAL DRESSING  
ADD GRILLED CHICKEN \$4.95 OR SHRIMP \$6.95 PER PERSON

SEASONAL FRUIT

CHOOSE 2 MAIN DISHES: VEGETARIAN FRITATTA, FRENCH TOAST, SCRAMBLED EGGS,  
THE COLONNADE QUICHE, WAFFLES, OR BLINTZES  
ADD CHICKEN SCAMPI FOR \$4.95 PER PERSON

CHOOSE 2 SIDE DISHES: HERB ROASTED POTATOES,  
SMOKED BACON, COUNTRY HAM, SAUSAGE

SERVED WITH COFFEE, TEA AND ORANGE JUICE

**\$23.95 PER PERSON**

ASSORTED SEASONAL MUFFINS, BREADS, AND PASTRIES  
SERVED WITH BUTTER AND ASSORTED PRESERVES

MIXED GREEN SALAD WITH SEASONAL DRESSING  
ADD GRILLED CHICKEN \$4.95 OR SHRIMP \$6.95 PER PERSON

SEASONAL FRUIT

CHOOSE 3 MAIN DISHES: VEGETARIAN FRITTATA, FRENCH TOAST, SCRAMBLED EGGS,  
THE COLONNADE QUICHE, WAFFLES,  
BLINTZES OR EGGS BENEDICT  
ADD CHICKEN SCAMPI FOR \$4.95 PER PERSON

CHOOSE 3 SIDE DISHES: HERB ROASTED POTATOES, SMOKED BACON,  
COUNTRY HAM, SAUSAGE, PROSCIUTTO WRAPPED ASPARAGUS

SERVED WITH COFFEE, TEA AND ORANGE JUICE



# ADDITIONAL BRUNCH STATIONS

## BEVERAGE BAR

2 HOUR BEVERAGE BAR WITH A SELECTION OF MIMOSA'S, SPICY BLOODY MARY'S AND BELLINI'S, RED AND WHITE WINE, SODA, JUICE, TEA AND COFFEE

**\$8.95 PER PERSON**

\$3.95 PER PERSON FOR AN ADDITIONAL HOUR

BEVERAGE BAR ON CONSUMPTION \$5.95 PER DRINK, \$1.95 FOR SODA AND JUICE

## OMELET STATION

WITH SELECTION OF FRESH VEGETABLES, CHEESES AND MEATS PREPARED TO ORDER

**\$6.95 PER PERSON**

\$50.00 CHEF'S FEE

## HEALTHY START STATION

FEATURING YOGURT, COTTAGE CHEESE, GRANOLA, SELECTION OF SEASONAL FRESH FRUITS AND DRIED BERRIES AND NUTS

**\$5.95 PER PERSON**

## CLASSIC TEA SANDWICHES.

CHOOSE THREE: CLASSIC EGG SALAD WITH FRESH DILL, CUCUMBER AND WATERCRESS, TUNA SALAD, BLT, SESAME-CRUSTED CHICKEN SALAD, GOAT CHEESE AND CHIVE, TARRAGON SHRIMP SALAD, SMOKED SALMON WITH CREAM CHEESE.

**\$6.95 PER PERSON**

## CHEF'S CARVING STATION

A CARVING STATION WITH CHOICE OF ONE: FILET OF BEEF TENDERLOIN, PORK TENDERLOIN, VIRGINIA BAKED HAM, OR OVEN ROASTED TURKEY BREAST. EACH SERVED WITH A SELECTION OF APPROPRIATE GRAVIES AND SAUCES AND BREADS

**\$14.95 PER PERSON**

ADD AN ADDITIONAL MEAT, CRAB CAKES OR FISH FOR \$6.95 PER PERSON \$50.00 CHEF'S FEE

## SALAD TABLE

A SELECTION OF DELICIOUS, FRESH SALADS INCLUDING : CLASSIC CAESAR, WALDORF, GREEK SALAD WITH PASTA, RED POTATO SALAD, MIXED GREENS WITH CRANBERRY AND CRUMBLLED BLUE CHEESE, ANTIPASTO WITH GRILLED VEGETABLES, ASSORTED MEATS AND CHEESES

**\$6.95 PER PERSON (CHOOSE 3)**

ADD GRILLED CHICKEN \$4.95 OR SHRIMP \$6.95 PER PERSON

## DESSERT STATION

SWEET TREATS FOR ALL AGES! A SELECTION OF MINI DESSERTS: HOUSE MADE CANOLLI'S AND SEASONAL MINI DESSERTS

**\$7.95 PER PERSON**

## CRUDITÉ AND CHEESE DISPLAY

ALL OF YOUR SEASONAL FAVORITES PRESENTED IN A BEAUTIFUL DISPLAY. FRESH SEASONAL VEGETABLE DISPLAY WITH SIGNATURE SPINACH DIP, GARLIC HUMMUS PLATTER WITH FLATBREADS, ASSORTMENT OF DOMESTIC AND IMPORTED CHEESES WITH A SELECTION OF CRACKERS

**\$6.95 PER PERSON**

ADD SHRIMP COCKTAIL SHOOTER \$2.95 PER PERSON

ADD FRUIT PLATTER \$2.95 PER PERSON

## DESSERT SERVICE

CUSTOM CUPCAKES \$1.95 PER PERSON, DESSERT PLATTER FOR THE TABLE \$3.95 PER PERSON, CHEESECAKE OR THE COLONNADE SIGNATURE TRIO OF MINI DESSERTS \$5.95

*ALL FOOD AND LIQUOR IS SUBJECT TO A 20% SERVICE CHARGE AND APPLICABLE SALES TAX.*

# THE COLONNADE AFTERNOON TEA

**\$19.95 PER PERSON**

SELECTION OF GOURMET TEAS

ASSORTED SCONES, MUFFINS, BREADS AND PASTRIES  
SERVED WITH BUTTER AND ASSORTED PRESERVES

MIXED GREEN SALAD WITH SEASONAL DRESSING  
WITH GRILLED CHICKEN ADD \$4.95 PER PERSON OR SHRIMP ADD \$6.95 PER PERSON

SEASONAL FRUIT KABOB

CHOOSE 4 CLASSIC TEA SANDWICHES FROM BELOW:

CLASSIC EGG SALAD WITH FRESH DILL, CUCUMBER, TUNA SALAD, BLT, GOAT CHEESE AND  
CHIVE, SHRIMP SALAD, SESAME-CRUSTED CHICKEN SALAD, SMOKED SALMON WITH DILL  
CREAM CHEESE

ASSORTED MINI DESSERTS

## THE COLONNADE SERVICE OPTIONS

MAKE ANY ENTRÉE A DUAL PLATE

AFTER DINNER CORDIAL BAR

ESPRESSO/CAPPUCCINO CART WITH BARISTA

INTERNATIONAL / DOMESTIC CHEESE AND SEASONAL FRUIT COURSE

SPECIALTY MARTINI OR DRINK BAR SERVING AN EXTENSIVE MENU OF  
SPECIALTY MARTINIS OR CUSTOM DRINKS

CUSTOM ICE SCULPTURE

CUSTOM LINENS AND OVERLAYS

WINE SERVED WITH DINNER

CHOCOLATE DESSERT FOUNTAIN

CHAMPAGNE TOAST

CHAIR COVERS

CONSULT OUR EVENT PLANNERS FOR ANY OCCASION!

# THE COLONNADE SPECIAL EVENTS

## **ACCOMMODATIONS**

APPOINTMENTS TO VIEW THE COLONNADE CAN BE MADE BY CONTACTING PAUL BLACKLEDGE OR JOSHUA MAST AT 570-342-6114 OFFICE. CERTAIN RESTRICTIONS APPLY FOR EXCLUSIVE USE OF THE COLONNADE SUCH AS RENTAL AND FOOD AND BEVERAGE MINIMUM REVENUE GUARANTEES.

## **SPECIAL SERVICES**

OUR EXPERIENCED EVENT MANAGERS AND OUR ON SITE CHEF ARE AVAILABLE TO ASSIST YOU WITH MENU PLANNING AND OTHER ARRANGEMENTS TO ENSURE A SUCCESSFUL EVENT. WE CAN ALSO ASSIST YOU WITH ENTERTAINMENT, FLORAL ARRANGEMENTS, ICE CARVINGS, DECORATIONS, AND THEME PARTIES.

## **MENU SELECTIONS**

WE PRIDE OURSELVES ON PROVIDING EXCEPTIONAL FOOD AND SERVICE DESIGNED TO YOUR INDIVIDUAL NEEDS AND TASTES. PREPARATIONS MAY VARY BASED ON SEASONAL ITEMS IN INVENTORY BUT WE WILL ALWAYS PROVIDE YOU WITH A CUSTOM MENU BASED ON YOUR SPECIFIC DESIRES. MENU PRICES ARE SUBJECT TO CHANGE, HOWEVER PRICING WILL BE GUARANTEED FOR ANY EVENT WITH A SIGNED BANQUET EVENT ORDER AND DEPOSIT. CHOICES OF MENU SELECTION ARE REQUIRED THREE (3) WEEKS PRIOR TO YOUR EVENT.

## **GUARANTEES**

IN ARRANGING PRIVATE PARTIES, THE COLONNADE REQUIRES A MINIMUM GUARANTEE OF ATTENDANCE SEVEN (7) BUSINESS DAYS PRIOR TO YOUR EVENT. THIS GUARANTEE IS NOT SUBJECT TO REDUCTION. SHOULD NO GUARANTEE OF ATTENDANCE BE PROVIDED FIVE (5) BUSINESS DAYS PRIOR TO YOUR EVENT, THE EXPECTED NUMBER OF ATTENDEES WILL BE PLANNED AND CHARGED FOR. IF YOU HAVE QUESTIONS OR CONCERNS REGARDING GUARANTEED ATTENDANCE, PLEASE ASK OUR EVENT MANAGER.

## **FOOD AND BEVERAGE SERVICE**

ALL FOOD AND BEVERAGE SERVED AT THE COLONNADE MUST BE PURCHASED THROUGH THE COLONNADE.

## **DECORATIONS**

THE COLONNADE IS A FULL SERVICE EVENT SPACE. WE ARE DELIGHTED TO ARRANGE EVERY FACET OF YOUR EVENT. WE HAVE ACCESS TO A WIDE VARIETY OF LIGHTING, FLORAL, SPECIAL LINENS, PROPS AND DECORATIONS, AS WELL AS, ENTERTAINMENT. ANY ADDITIONAL DECORATION OR FLORAL ARRANGEMENTS BROUGHT INTO THE SPACE BY OUTSIDE PURVEYORS MUST MEET THE APPROVAL OF OUR EVENT MANAGER. THE COLONNADE WILL NOT PERMIT THE AFFIXING OF ANY ITEM TO THE WALLS OR CEILINGS.

## **SERVICE CHARGE AND SALES TAX**

ALL FOOD AND LIQUOR IS SUBJECT TO A 20% SERVICE CHARGE AND APPLICABLE SALES TAX. DÉCOR AND MISCELLANEOUS ITEMS ARE SUBJECT TO APPLICABLE TAXES.

## **PAYMENT**

THE COLONNADE ACCEPTS ALL MAJOR CREDIT CARDS. MOST EVENTS REQUIRE A DEPOSIT OF 20% OF THE ESTIMATED CHARGES AT TIME OF BOOKING AND 50% DUE ONE (1) MONTH PRIOR TO THE EVENT DATE. THE COLONNADE DOES NOT DIRECT BILL; ALL EVENTS MUST BE PAID IN FULL BY THE CONCLUSION OF THE EVENT. CASHIER'S CHECKS, CASH, AND PERSONAL CHECKS ARE ACCEPTED. FOR CASH AND CHECK TRANSACTIONS, THE BALANCE IS TO BE PAID IN FULL THREE (3) BUSINESS DAYS PRIOR TO YOUR EVENT.

## **SECURITY**

THE COLONNADE RESERVES THE RIGHT TO REQUIRE ADDITIONAL SECURITY FOR CERTAIN EVENTS. ONLY SECURITY COMPANIES THAT HAVE ESTABLISHED WORKERS COMPENSATION POLICIES AND LIABILITY INSURANCE WILL BE AUTHORIZED ON THE PROPERTY. THE COLONNADE STRICTLY ENFORCES A NO WEAPONS POLICY.

PO  
SH

@

The  
Scranton  
Club



PLEASE ALSO VISIT US AT

POSH

AT THE SCRANTON CLUB

OPEN TO THE PUBLIC

Restaurant,  
Bar, Lounge,  
and Event Space

570.955.5890

POSHatSC.COM

404 North Washington Avenue, Scranton PA 18503